

School of Engineering and Engineering Technology
ELECTRICAL & COMPUTER ENGINEERING, B.S.
ELECTRICAL CONCENTRATION (ECEE)

2024-25

SUGGESTED COURSE SEQUENCE

First Semester - Fall			
16 Hours			
___	BIBL	1033	3 Biblical Literature
___	COSC	1303	3 Computer Science I
___	ENGL	1013	3 English Composition I
___	ENGR	1513	3 Intro to Engineering Practice I (Fall only)
___	LETU	1101	1 Cornerstones of Life & Learning
___	MATH	1903	3 Calculus I ⁽¹⁾

Second Semester - Spring			
17 Hours			
___	ENGL	1023	3 English Composition II
___	ENGR	1311	1 Manufacturing Processes Lab
___	ENGR	1523	3 Intro to Engineering Practice II (Spring only)
___	MATH	2013	3 Calculus II ⁽¹⁾
___	PHYS	2011	1 University Physics I Lab (Spring only)
___	PHYS	2013	3 University Physics I (Spring only)
___	THEO	2043	3 Biblical Theology for the Christian Life

Third Semester - Fall			
17 Hours			
___	COMM	1113	3 Intro to Speech Communication
___	EEGR	2051	1 Circuits & Measurements Lab ⁽¹⁾
___	EEGR	2053	3 Electric Circuits ⁽¹⁾
___	MATH	2203	3 Differential Equations
___	PHYS	2021	1 University Physics II Lab (Fall only)
___	PHYS	2023	3 University Physics II (Fall only)
___			3 Civic Engagement Elective

Fourth Semester - Spring			
17 Hours			
___	CHEM	1111	1 General Chemistry I Lab
___	CHEM	1113	3 General Chemistry I
___	EEGR	2163	3 Advanced Circuits (Spring only) ⁽¹⁾
___	EEGR	3213	3 Digital Electronics
___	ENGR	2400	0 Sophomore Design Seminar (Spring only)
___	ENGR	2704	4 Project Mgmt, Design & Entrepreneurship
___	MATH	2023	3 Calculus III

Fifth Semester - Fall			
15 Hours			
___	EEGR	3243	3 Electronics and Lab (Fall only)
___	EEGR	4513	3 Electromagnetic Fields & Waves (Fall only)
___	ENGR	2023	3 Introduction to Mechanics ⁽¹⁾
___	MATH		3 Math Elective ⁽⁴⁾
___			3 Civic Engagement Elective

Sixth Semester - Spring			
15 Hours			
___	BUSI	3023	3 Entrepreneurship for Engineers ⁽³⁾
___	EEGR	3233	3 Intro to Microcontrollers (Spring only) ⁽²⁾
___	EEGR	3253	3 Advanced Electronics & Lab (Spring only)
___	EEGR	4283	3 Digital Signal Processing (Spring only)
___			3 Technical Elective ⁽⁵⁾

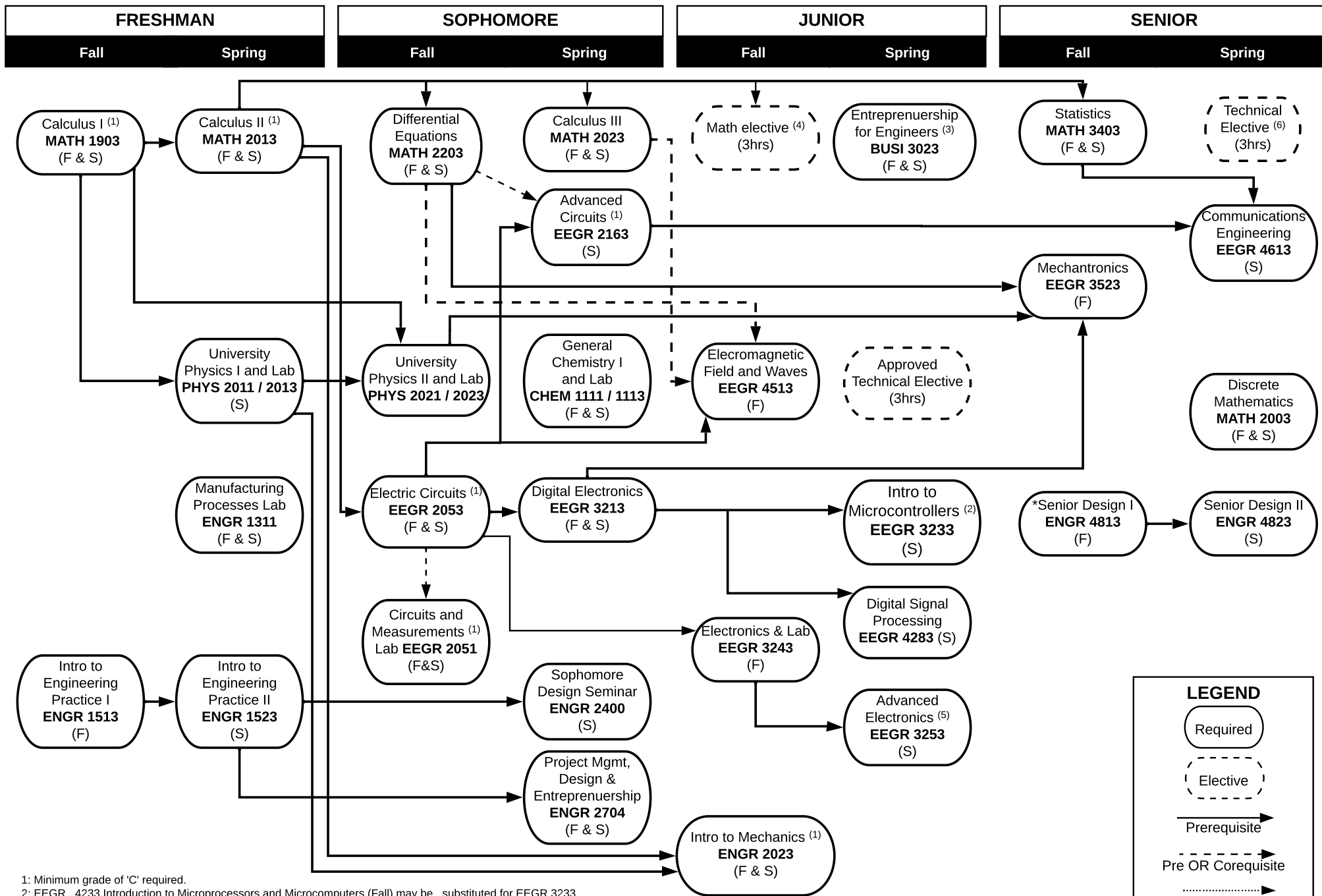
Seventh Semester - Fall			
15 Hours			
___	BIBL		3 Biblical Engagement Elective
___	EEGR	3523	3 Mechatronics (Fall only)
___	ENGR	4813	3 Senior Design I (Fall only)
___	MATH	3403	3 Statistics
___			3 Humanities & Fine Arts Elective

Eighth Semester - Spring			
15 Hours			
___	EEGR	4613	3 Communications Engineering (Spring only)
___	EEGR		3 Technical Elective ⁽⁶⁾
___	ENGR	4823	3 Senior Design II (Spring Only)
___	MATH	2003	3 Discrete Mathematics
___	THEO		3 Theological Engagement Elective

TOTAL HOURS 127

- 1: Minimum grade of 'C' required.
- 2: EEGR 4233 Introduction to Microprocessors and Microcomputers (Fall) may be substituted for EEGR 3233.
- 3: ENGR 6223 Advanced Engineering Mathematics recommended if considering engineering graduate school.
- 4: MATH 4403 (recommended) or 2303
- 5: Any approved engineering course or COSC course.
- 5: Any 4000 level approved EEGR course

rev 5/12/2024



1: Minimum grade of 'C' required.
 2: EEGR 4233 Introduction to Microprocessors and Microcomputers (Fall) may be substituted for EEGR 3233.
 3: ENGR 6223 Advanced Engineering Mathematics recommended if considering engineering graduate school.
 4: MATH 4403 (recommended) or 2303
 5: Any approved engineering course or COSC course
 6: Any 4000 level approved EEGR course

* Senior standing, completion of junior courses in concentration, and consent of instructor required.

LEGEND

- Required
- Elective
- Prerequisite
- Pre OR Corequisite
- Corequisite
- (F) = Fall Only
(S) = Spring Only